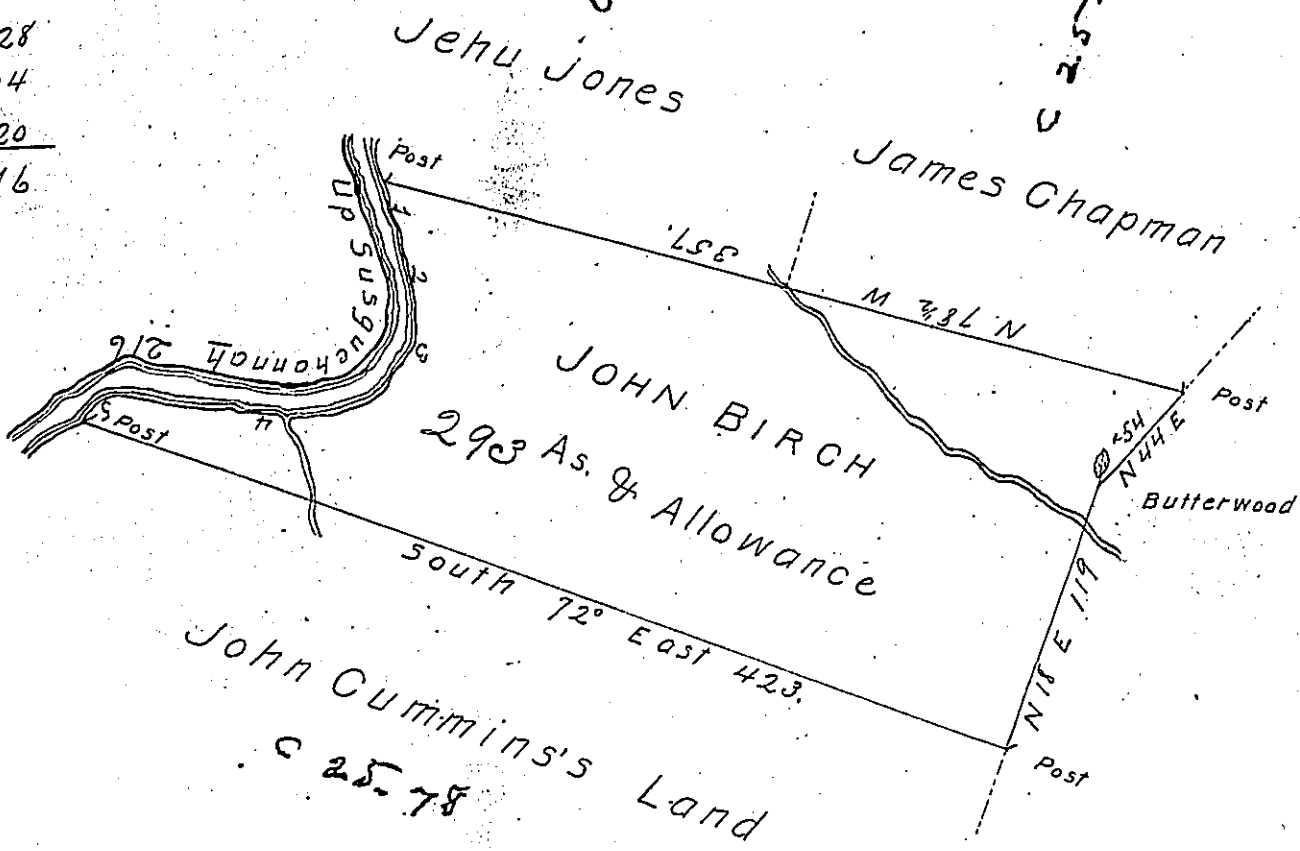


Courses & Distances  
 Up the River  
 1 S. 22. E 18.  
 2 S. 8. E 46  
 3 S. 38. W. 28  
 4 West - 104  
 5 S 66 W 20  
 216



A Draught of a Tract of Land called the Landing Place situate on the southerly side of the West Branch of Susquehanna adjoining & below Land of John Cummins in the County of Bedford Containing two hundred & ninety three Acres & the usual Allowance of six <sup>1</sup>/<sub>4</sub> Cent for Roads &c Surveyed the first Day of November 1775 for John Birch in pursuance of a Warrant Dated the third Day of August 1773 by

To } Thomas Smith D.D.  
 John Luskens Esqr }  
 Surveyor General }

IN TESTIMONY that the above is a copy of the original remaining on file in the Department of Internal Affairs of Pennsylvania, made conformably to an Act of Assembly approved the 16th day of February, 1833, I have hereunto set my Hand and caused the Seal of said Department to be affixed at Harrisburg, this sixth day of October 1903.

*Grace B. Brown*  
 Secretary of Internal Affairs.